




After-sales service

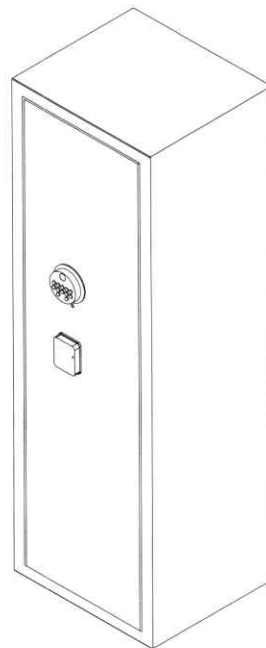
Hello there!
We're excited to offer you seamless service.

You can contact us through the following methods on the right to access the following below	 302-498-1264
	 olffurniture@gmail.com
	 simplyscan our Whatsapp QR code

- 1 Comprehensive installation videos
- 2 Activate warranty options
- 3 Expert post-sales support
- 4 Exclusive discounts
- 5 And more additional services



INSTRUCTION MANUAL

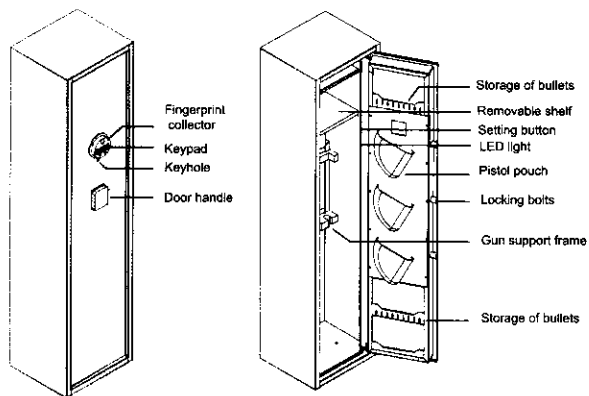


Our goal is to enhance your shopping experience.
We look forward to hearing from you.

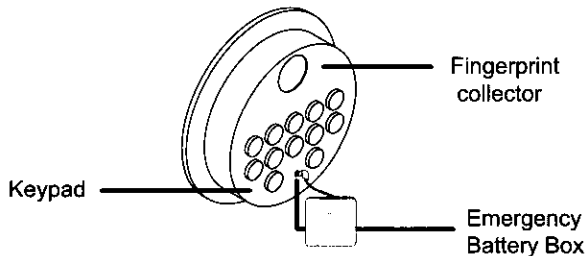
Thank you!

Never keep emergency keys and emergency battery box in your gun cabinet !!!

Component Description



Schematic Drawing of Control Panel



▲ NOTE :

1. The user can only set one code for the cabinet.
2. The initial user code is "1234", need to be modified. (After you set the new different user code successfully, the initial user code will be covered automatically.)
3. The code consists of a minimum 1 number and maximum 8 numbers.
4. The "*" button is delete button. After pressing the "*" key, the entered code will be cleared.



Set the Fingerprint

1. To set up a new fingerprint, you must first open the door and then press the reset button.
2. Then place your finger on the fingerprint collector. When you hear a short "BEEP", remove your finger and press again, repeat five times.
3. The buzzer "beeps" and the green LED light flashes twice, which means the fingerprint setup is successful. (A total of 28 fingerprints can be entered)

Four Ways to Open the Door

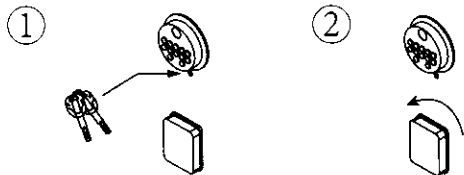
- 1. The first unlocking method: Use the emergency key**
Insert the emergency key into the keyhole and turn it counterclockwise to the limit. Then turn the door handle clockwise to open the safe door (for first time opening, forgetting password or fingerprints, or when the battery is dead).
- 2. The second unlocking method: Use the code**
After installing the battery, input the password and press the "*" key once more, the right indicator light will be on, then turn the door handle clockwise to open the door.
- 3. The third unlocking method: Use the fingerprint**
Put your finger on the fingerprint collector, the RIGHT indicator light will be on. Turn the door handle clockwise to open the door.
- 4. The fourth unlocking method: Use the emergency battery box + code/fingerprint**

When the battery is too low to open the door, insert 4AA batteries in the emergency battery box, plug the emergency power cord into the emergency power jack below the panel, then enter the correct code/fingerprint to open the door.

System Setting

Opening Your Cabinet For The First Time

NOTE: Please use the emergency key to open the cabinet for the first time.



Open the keyhole cover to expose the emergency keyhole.
Insert the emergency key into the keyhole, turn it counterclockwise to the limit. Turn the door handle clockwise to open the door for the first time.

Insert The Battery

Remove the internal battery case cover. Install 4 AA batteries(not included) and restore battery case cover.

▲ NOTE :

1. If batteries are too low to open the door, please use the emergency battery box comes with cabinet.
2. Rechargeable battery is not recommended, as it may destroy the internal electronic components of the cabinet.

Set The User Code

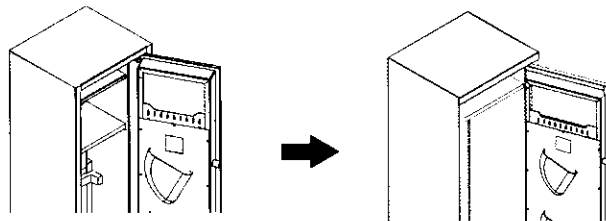
1. Enter the initial password 1234 and press the # key to confirm.
2. Then, the green light is on, indicating that the cabinet door is unlocked. Please press the * key before the green light goes off.
3. Then, immediately enter the new password and press the # key to confirm. The green light is on, indicating successful setup
4. Test the new password by entering it and pressing the # key to confirm.

Restore Factory Settings

Press and hold the reset button for 5-6 seconds without letting go, and you will hear a long "drop" sound, and at the same time, the green LED light will be on for a while, which means the system is restored. Success: password 1234, fingerprint blank.

Removable Shelf

This gun cabinet has a removable shelf, with the shelf, you could place short rifles and store your pistols and ammo on the shelf; Without shelf, you could place your long rifles, more flexible storage space.

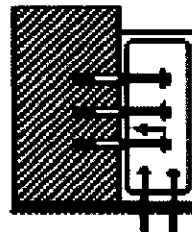


Mounting Instruction

▲ NOTE:

Please make sure to mount the gun cabinet on the wall or floor otherwise it may fall over and threaten your safety.

- We have provided 5 holes for your convenience - 3 on the back and 2 on the bottom. You will also find 5 expansion screws included. Depending on your specific needs, you can use these expansion screws to securely fasten the gun safe to either the wall or the floor.



Thank you for choosing our products! Please take your time to read and familiar with the proper operating procedures presented on the following pages.

IMPORTANT



- Tip over hazard: Secure the cabinet! The cabinet can be tipped over by children or adults, please make sure the cabinet is mounted on the wall or floor.
- Keep the keys in a secure place away from children.
- Do not move this cabinet using its handle.

Lighting

When entering the correct password or correct fingerprint to open the door, the lighting inside the box will be on for 25 seconds.

Parts List



Instruction Manual*1



Emergency Battery Box*1



Expansion Screws*5



Emergency Key*2

Dual Alarm System

- 1: After entering the wrong password three times in a row, an alarm will sound for 20 seconds, and the system will lock for 20 seconds. (During the lock period, no operations are allowed).
- 2: After entering the wrong fingerprint five times in a row, an alarm will sound for 20 seconds. During the alarm, you can enter the correct password or fingerprint to unlock the safe.
- 3: Press and hold the * key for 3 seconds without releasing it. When you hear a brief "beep-beep" and see the green LED light flashing twice, it indicates that the vibration alarm function is activated.
- 4: When the Vibration Alarm is turned on and the safe is shaken, the safe's speaker will sound an alarm that lasts 20 seconds. During the alarm period, you can enter the correct password or fingerprint to unlock the safe and disarm the alarm.

Warnings

- ▲ 1. Do not lock the emergency key or emergency battery box into the cabinet.
- ▲ 2. The initial user code is "1234", which needs to be modified.
- ▲ 3. If the cabinet is not used for a long time, the battery should be removed to prevent leakage of liquid from damaging the electronic system.
- ▲ 4. Purchase 4 AA batteries in advance, this cabinet does not contain batteries.

Insufficient power prompt

Five consecutive beeps indicate low power, please replace the battery in time.